

# NEUTRINO™ Database

Revolutionizing Real-Time Logging and Data Management in  
Oil and Gas Exploration

## FEATURES



**Full-Featured Real-Time Logging:**  
Experience comprehensive depth, time, and TVD-based logging in real-time.



**Seamless Integration with Private Cloud Database:**  
Effortlessly push live data to your private cloud database.



**Real-Time WITS In, WITS Out, and WITSML:**  
Empower your operations with up-to-the-minute insights for informed decision-making.



**Import/Export Files in LAS, CSV, and DLIS Formats:**  
Streamline data exchange with support for widely-used file formats.



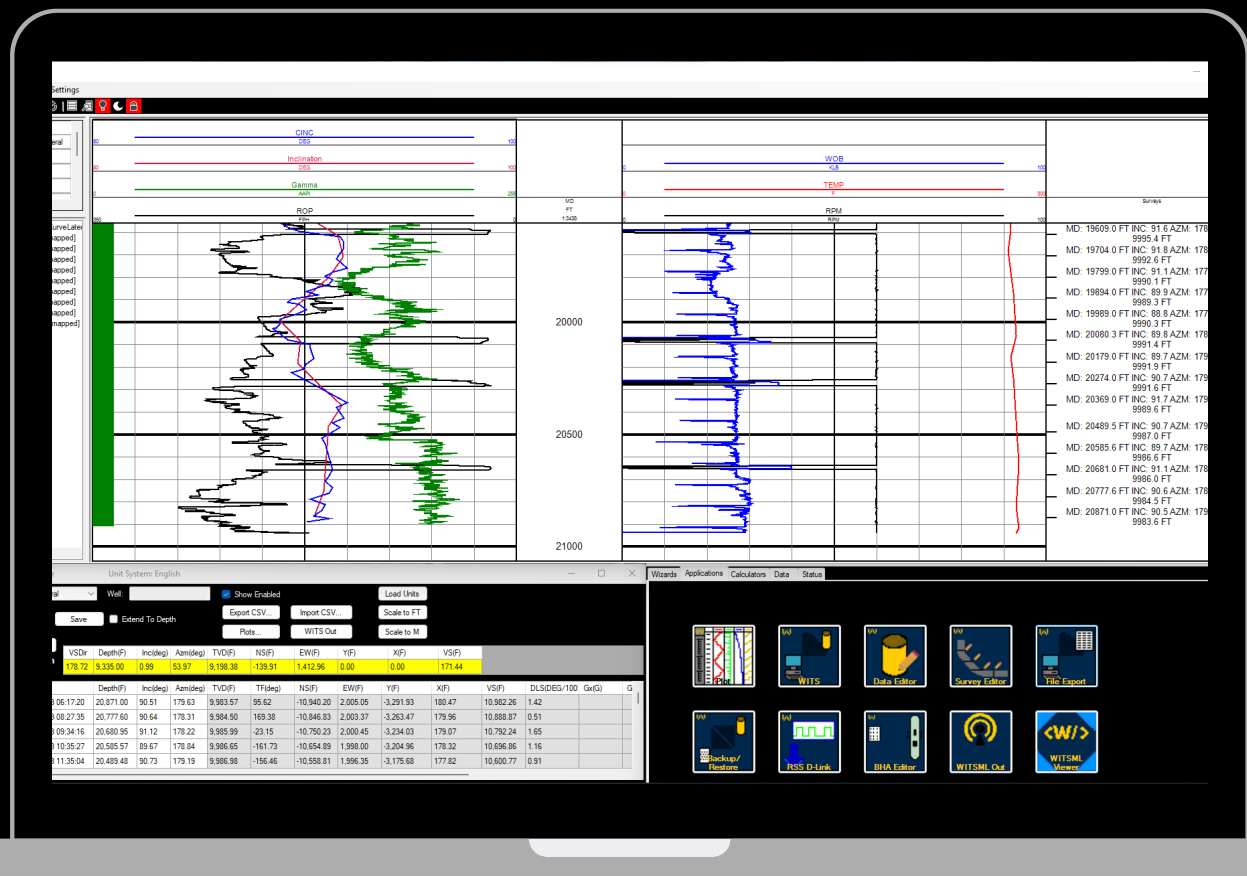
**Access Live Data Anywhere in the World:**  
Break free from geographical constraints – access live data from any corner of the globe for your globally distributed teams.



**BHA Builder Feature:**  
Transform your drilling operations with our intuitive BHA Builder feature. Effortlessly design and optimize Bottom Hole Assemblies for maximum drilling efficiency.



**Survey Editor:**  
Customize and fine-tune surveys with our user-friendly Survey Editor.



## Why Neutrino DB?

- **Real-Time Precision:** Experience unmatched precision with our full-featured real-time logging and data management capabilities.
- **Global Accessibility:** Access live data from anywhere in the world, promoting seamless collaboration and decision-making.
- **Certified Reliability:** Backed by Saudi Aramco certification, Neutrino DB ensures the highest standards of reliability and performance.
- **Versatile Compatibility:** Import and export data effortlessly ensuring compatibility with industry norms.

**CONTACT US**



[www.Wolverineoft.com](http://www.Wolverineoft.com)



[Info@wolverineoft.com](mailto:Info@wolverineoft.com)



5125 Hiltonview Rd  
Houston, TX 77086